

## MCI Keyboard Tech Specs Hardware and Options



### 3 Track Magnetic Stripe Reader (MSR)

- The MSR is compatible with all magnetic cards according with ISO 7810, ISO 7811, ISO 7812, and ISO 7813
  - Bidirectional MSR, cards will be read in either direction
  - 3 tracks, including the ability to read drivers license format AAMVA and CADL
  - Guaranteed for 500K swipes
  - Swipe speed 5 to 55 ips
  - Error rate less than 0.5%
  - Status LED provides confirmation of a correct read
- Headers and terminators are programmable



### Glidepad

A glidepad could be installed in a 3x4 key position at the upper left or right corner. In case of the MCI3100, the glidepad option is installed at the arrow keys section. Only available by using USB interface. Two mouse buttons integrated.

- Fully compatible with Windows 98, NT 4.0, 2000, XP, Windows 7 and Linux drivers.
- IP 54
- Capacitive-sensing technology
- No additional drivers are necessary, works as a mouse



### 5 Positions Keylock with 3 Keys

- Headers and terminators are programmable
- Keyboard Offline configurable
- IP-54 rating for dust and liquid protection
- Lifetime: 20,000 cycles



### Smart Card Reader (SCR)

- Supply current 60 mA to power the smart card
- USB Interface
- Application Interface PC/SC, OCF and CT-API
- ISO 7816 and EMV 2000 compliant
- HBCI compliant
- USB CCID
- Microsoft WHQL certified



## MCI Keyboard Tech Specs Hardware and Options

### Keys and Keypad

- > 30 Million activations per key position
- Multilayer patented technology provides IP54 protection against dust and spills
- Keys available in Black and White. Additional colors on request, minimal order quantities apply
- Easy to reconfigure with multiple key sizes
- Customized keys available:
  - Key spacing 19 mm
  - Actuation travel 3,5 mm
  - Actuation Force 0.6 N
  - Impact stability 10 N, 1 min
- Bounce Time 5 ms max.
- Contact
- Resistance 800 ohm max.



### OCR

- Reads passports, national ID cards, visas and other documents conforming to ICAO Document 9303
- Bi-directional hand-swipe
- No moving parts
- USB interface with virtual COM port
- Software keyboard wedge available



### Fingerprint

- Optical sensor
- Excellent image quality
- Compatible with Windows® Vista (32/64 bit), XP Pro (32/64 bit), XP Home, 2000 and Windows Server® 2000, 2003
- USB device
- SDK and source code available for C, C++, C#, Java, .NET and ActiveX/COM
- UPOS for JavaPOS and OPOS
- Data can be encrypted



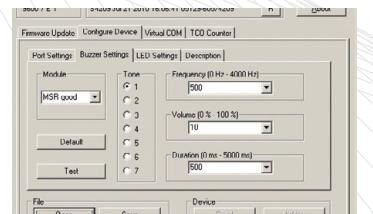
### Barcode Scanner

- High visibility LED
- Omni-directional area imager
- reading linear (1-D) and full matrix codes (2-D)
- Capture digital images
- USB interface (virtual COM port, HID, HID keyboard output)
- Scanning from Displays (e. g. mobile phones)
- SDK available
- Visible and audible feedback for scans
- 2 Line Display (2x16)



### Tone Indicator

- User programmable buzzer for e. g. good and bad reads
- Configurable volume and duration of sound
- Different frequency of sound
- Sequence of sounds
- Controlled by commands



### LED's

- Status LED's for NUM, CAPS, SCROLL
- ACCEPT LED to indicate good and bad MSR read
- LED control by Software API possible



## MCI Keyboard Tech Specs Drivers and Tools



### Encryption

PrehKeyTec offers an encryption of the MCI keyboards. Sensible data like card holder data of magnetic stripe cards can be encrypted inside the keyboard.

- Secure data entry
- Encryption of MSR, keylock or keyboard data
- Several encryption algorithms (e. g. ARC4, AES), others on request
- Encryption key length up to 256 bit
- User can activate or deactivate encryption by command
- Stores encryption key table in a secure area of keyboard controller
- Keyboard can be recognized by hardware key
- Library or source code to decrypt data

### TCO

Counters to capture statistic features of keys and modules for preventive maintenance to reduce service calls

- Good and bad reads of MSR data
- Count keylock changes
- Count key activations of defined keys
- Operating hours of the keyboard

### WinProgrammer

The WinProgrammer tool configures the modules and/or keytable and programs the keys of the MCI keyboard. It is a Windows® based application and easy to use.

- For Windows®
- Program up to 128 layer
- Program by drag and drop
- Configure header/terminators of modules (MSR, keylock etc.)
- Download encryption key
- Create user defined layouts

### Firmware Update Utility

- For Windows®
- To download firmware into MCI keyboards
- GUI and command line controlled
- Firmware can be updated remotely (e.g. via server) via Interface

### UPOS

- OPOS drivers for Windows®
- JavaPOS drivers for Windows® and Linux
- For MSR, Keylock, Tone Indicator and POS-Keys

## Available options per keyboard model

Product	MSR	Keylock	Smart Card	Glidepad (USB only)	Alpha layout	OCR	Scanner	Fingerprint	Encryption	TCO
MCI 3100	●	●	●	●	●**	N/A	N/A	●	●	●
MCI 128	●	●	●	●	●	N/A	N/A	N/A	●	●
MCI 111	●	N/A	N/A	●	●**	●	●	N/A	●	●
MCI 96	●	●	●	●	●	N/A	N/A	N/A	●	●
MCI 84	●	●	N/A	●*	N/A	N/A	N/A	N/A	●	●
MCI 60	●	●	N/A	●*	N/A	N/A	N/A	N/A	●	●
MSI 60	●	●	N/A	●*	N/A	N/A	N/A	N/A	●	●
MCI 30	●	N/A	N/A	N/A	N/A	N/A	●	N/A	●	●

\*Special Order

\*\* MCI 3x00 only available in Alphanumeric version

### Electronics

<b>Supply voltage</b>	+5 V ± 5%
<b>Current consumption</b>	Max. 60 mA (base model)
<b>Interface</b>	USB (PS/2 adaptor included). Hard wired PS/2 interface available upon request. Minimum order quantities apply. USB modules don't work on PS/2 interface.
<b>Auto repeat</b>	All keys, repeat frequency and delay time are programmable.
<b>Tone Indicator</b>	Keyclick and sound via command or UPOS.
<b>4 LEDs</b>	Caps lock; Scroll lock; Num lock; Accept LED for MSR and/or user controlled

### Materials

<b>Housing</b>	ABS
<b>Guide frame</b>	Polystrol
<b>Switching membrane</b>	Polyester
<b>Spring elements</b>	Elastomer
<b>Textile filter</b>	Trevira
<b>Keys and keycaps</b>	PBT/POM/PC/PMMA

### Temperature and Environment Ratings

<b>Operational temperature</b>	0°C to 50°C
<b>Air pressure</b>	700 hPa to 1060 hPa
<b>Storage &amp; transportation</b>	-40°C to 60°C
<b>Climatic class</b>	DIN-IEC 68, part 1, appendix A

### Certifications

<b>ESD/EMC/EMI Emissions</b>	CE Approval EN55022, FCC Part 15 Subpart B Class A
<b>Interface Immunity</b>	Electrostatic discharge immunity according to DIN EN 61000-4-2, test condition ±15 kV air and ± 8 kV contact discharge. Electromagnetic field immunity according to DIN EN 61000-4-3, field strength 10 V/m.

### Drivers and Tools

OPOS and JavaPOS drivers for MSR, Keylock, Keyboard and Tone Indicator. JavaPOS driver for Windows® and Linux.
Software API for Keyboard and Modules.
Software API for Encryption.
Drivers for SCR, Fingerprint, Scanner, OCR
Windows® programming tool WinProgrammer.
Windows® firmware update tool.
Keytable download tool for Windows® and Linux.
Can be used by remote control.
WEPOS verified (special order)