

BIXOLON SAMSUNG
Virtual Memory
Switch Manager
Manual
Ver. 1.0.2

Customer Display

BCD - 1000

Index

1. Introduction ...	2
2. User environment ...	2
3. Usage ...	3
3.1 Communication setting ...	3
4. Virtual Memory Switch Status ...	5
4.1 Operation ...	6

1. Introduction

This manual is to explain how to use the Virtual Memory Switch Manager for BCD-1000 Customer Display.

2. User environment

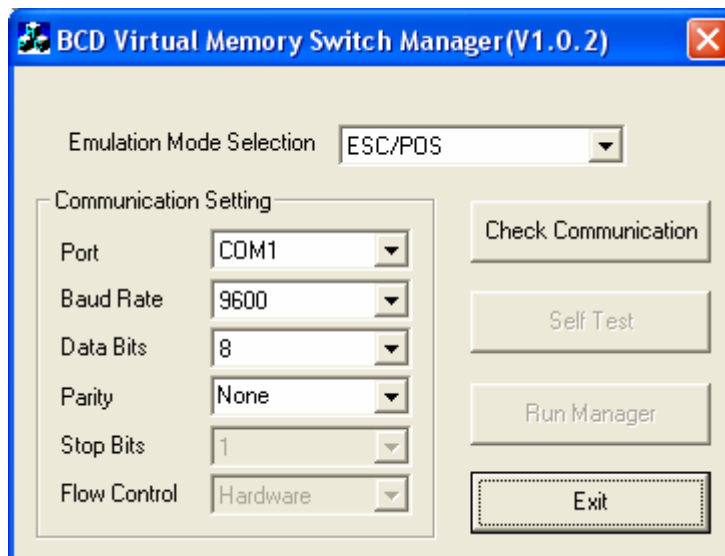
You can use the Virtual Memory Switch Manager on the following Operation Systems.

- Microsoft Windows 98
- Microsoft Windows ME
- Microsoft Windows 2000
- Microsoft Windows XP
- Microsoft Windows 2003 Server
- Microsoft Windows Embedded For Point Of Service

3. Usage

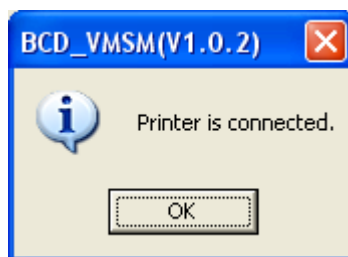
3.1 Communication setting

When you execute the program, the following window will pop up.

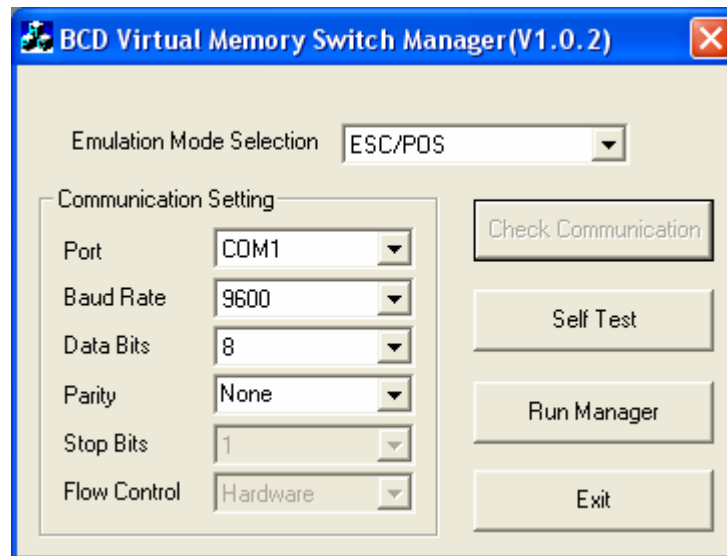


Select the interface type of the connected Customer Display and Emulation Mode.

[Check Communication]: Checks the status of the communication. When there is not any communication trouble, the following window will pop up.



When there is not any communication trouble, the Self test button and the Run manager button will be activated.

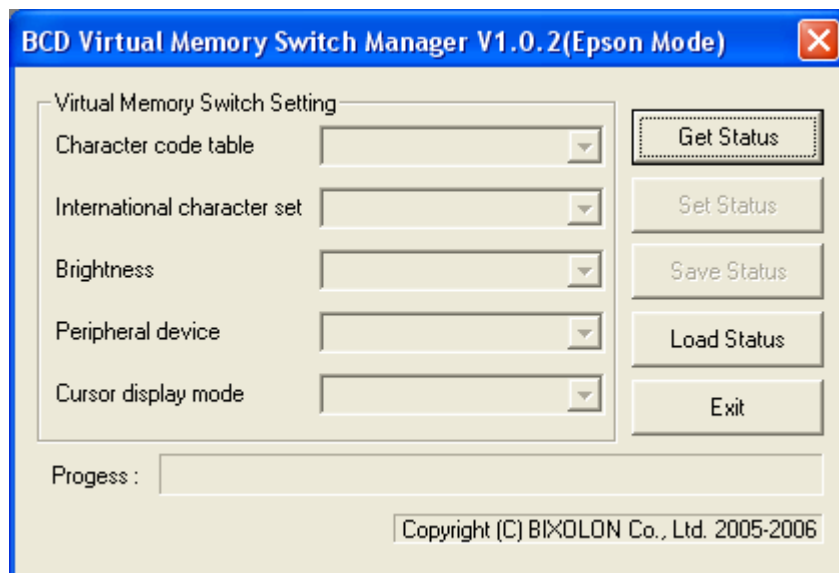


[Self Test]: displays the Self test page.

[Run Manager]: opens the Memory Switch setting window.

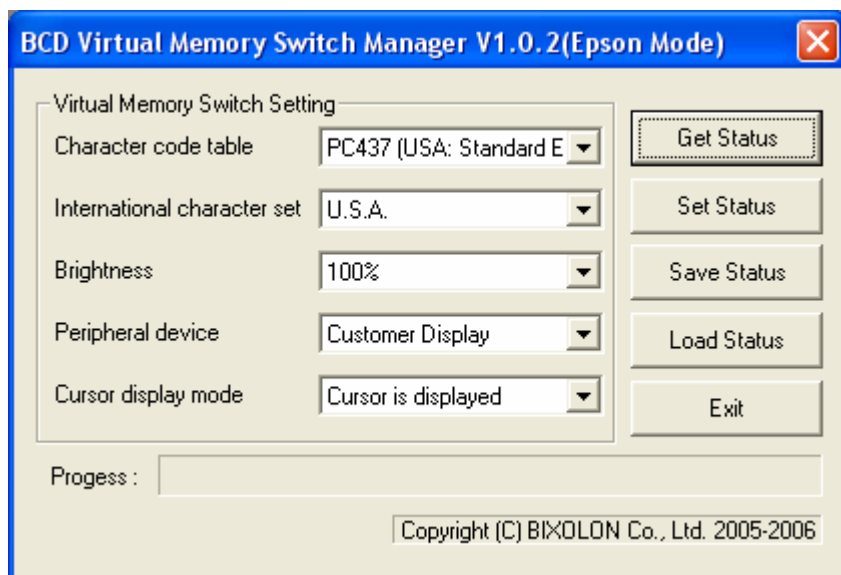
4. Virtual Memory Switch Status

When you click the [Run Manager] of the communication condition setting window, the following window will pop up.



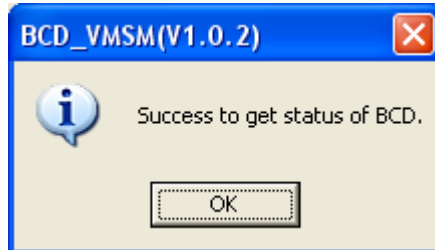
4.1 Operation

The Memory Switch Manager window shows the current memory switch setting of the customer display and allows setting up the status.

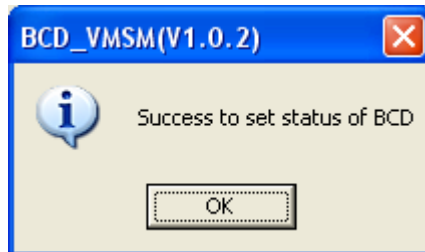


There are 4 main buttons on this window

[Get Status]: shows the current setting of the Memory Switch. If you get the setting of printer successfully, the following Windows will pop up.



[Set Status]: allows setting up new values specified by the user. If you set the Memory Switch properly, the following window will pop up.



[Save Status]: saves the new setting as a file.

[Load Status]: shows the setting loaded from the file.